

【 What is Sapporo Nanseki or Sapporo soft stone? 】

Sapporo Nanseki, or Sapporo soft stone, is the name of the rock formed by Shikotsu Volcano' s pyroclastic flow deposits. Shikotsu Volcano erupted 40,000 years ago and caused a large-scale pyroclastic flow. Its deposits cooled and solidified into a welded tuff, Sapporo Nanseki. Sapporo Nanseki is characterized by its speckled surface, excellent fire resistance, and ease of processing. It has contributed greatly to Hokkaido' s development because of its use as a construction material for various buildings in Sapporo and elsewhere in Hokkaido. Therefore, Sapporo Nanseki was designated as part of Hokkaido Heritage in 2018.

Transporting the stone

Smoothed stones were transported to construction sites. In 1910, transportation using a horse tramway began. As a result, transporting a large number of stones became possible.

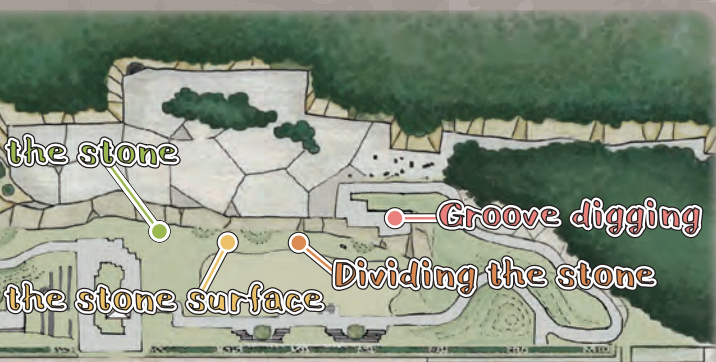
What you see here is a horse-tramway pallet loaded with stones.



Construction

After the stones arrived at a construction site, finishing work was performed. Piling up each piece of stone was exhausting labor.

This space is for visitors to play and rest. The display shows a method of piling up the stones of that time.



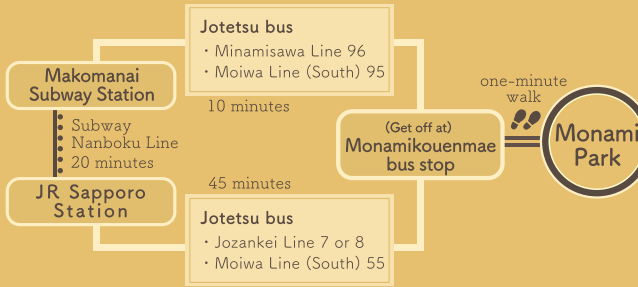
Location

9 ~ 11 jo 1 chome, Kawazoe, 7, 8, 12 chome, Kashiwaoka Makomanai, Minami-ku, Sapporo



How to get to Monami Park

Via public transport



By car



Contact information

Monami Park Management Office

(Designated administrator : The Yokohama Nursery Co., Ltd Hokkaido Office)

TEL : 011-578-3361 FAX : 011-578-3362

2-58, 10 jo 1 chome, Kawazoe, Minami-ku, Sapporo, 005-0810

E-mail : monami@mit-ueki.com

Official website : <https://www.mit-ueki.com/index.html>

Designed by Kono Momoko , Hanamura Mia Miyako Shuri , Yabuno Serina

札幌市立大学 SAPPORO CITY UNIVERSITY

藻南公園

— Monami Park —

complete guide



Sapporo Nanseki Square

Sapporo Nanseki Square used to be the Sapporo Nanseki quarry.

The square still retains vestiges of the quarry, including a working face from the early years of the Meiji Era, when the first full-scale quarrying operation began. In the square, various artifacts of quarrying operations are displayed so that visitors can follow the phases of quarry activity including quarrying, processing, and using stones as construction material.

Dividing the stone

The hewn stone was cut into appropriately sized pieces using iron wedges. Some of these divided stones are displayed.



Smoothing the stone surface

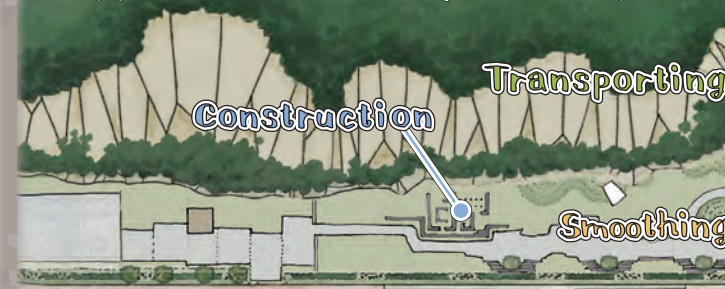
The stone surface was smoothed using a pick. Diagonal stripes on the surface show the marks of this process.

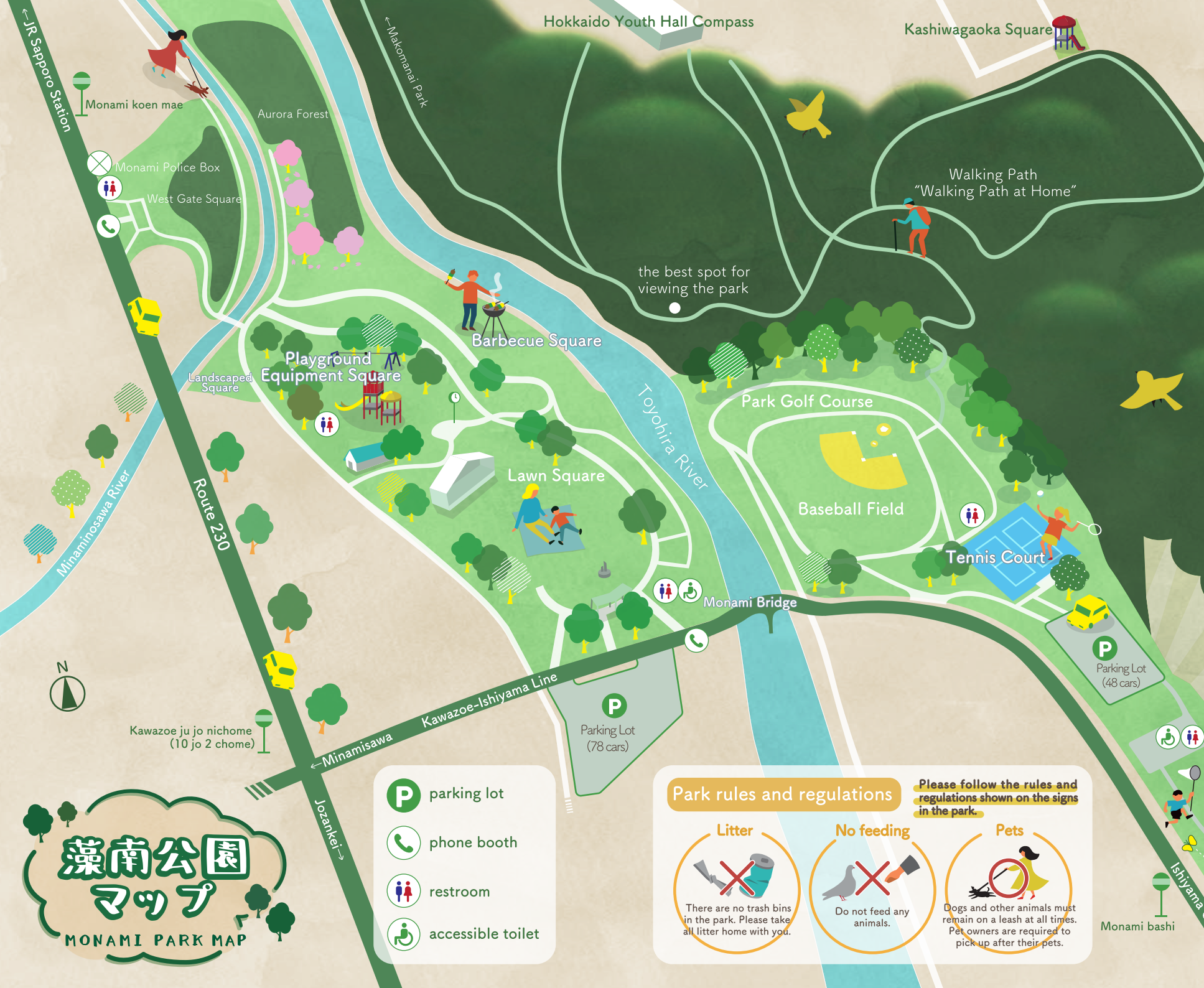


Groove digging

Groove digging refers to the process of hewing Sapporo Nanseki from the ground with picks. Here you can see grooves that have been dug out and a large piece of hewn stone. You may notice some pick marks on the huge cliff face in front of you.

Sapporo Nanseki Square Map





- parking lot
- phone booth
- restroom
- accessible toilet

Park rules and regulations

Litter

There are no trash bins in the park. Please take all litter home with you.

No feeding

Do not feed any animals.

Pets

Dogs and other animals must remain on a leash at all times. Pet owners are required to pick up after their pets.

Playground Equipment

The various types of colorful playground equipment are popular among children. Some pieces of equipment may even attract adults. Let's have fun!

Lawn and Stage

The spacious and relaxing lawn areas include an open-air stage. Seasonal events such as the Moiwa Summer Festival and Fireworks are held for the entertainment of visitors.

Sapporo Nanseki Square

This square used to be the Nanseki quarry. It was renovated into a park with the intention of developing a site displaying the history of Sapporo Nanseki. Some planning workshops were held with the involvement of local Sapporo residents.

Barbecue Square

The barbecue square is located on the spacious riverside of Toyohira river. While enjoying a barbecue, you can appreciate the breathtaking landscape of the forest and sheer cliff on the opposite side of the river.

● Open from 9:00 to 17:00. ●

Sports Field

Come exercise and get healthy in the park surrounded by beautiful nature!

● Park golf course (nine holes) free (closed on Wednesdays)

Baseball field (one)	Tennis courts (two)
Open from 5:00 to 21:00	Open from 7:00 to 21:00
1,200 yen per hour	640 yen per hour
Night-time lighting prices 1,200 yen per 30 minutes	Night-time lighting prices 120 yen per 30 minutes